

SAFETY PRECAUTIONS

1. The device must be installed by a qualified person,
2. Disconnect all power before working on the device. Don't touch any terminal when the power is ON.
3. Verify correct terminal connection when wiring.
4. Don't dismantle or repair the device whether it operates normally, otherwise no responsibility is assumed by producer and seller.
5. Never use the device at the site which can be invaded by corrode gas, strong sunshine light and rain.
6. Clean the device with a dry cloth.
7. Fail to follow these instructions will result in serious injury or death.

FEATURES

- Sensitivity adjustment from 2 to 100 lux
- Eternal light sensor included in delivery
- Fixed switching on and off delay
- LED indication for power supply and relay status
- 2 module Din-rail mounting

DESCRIPTION

Twilight switch RD-ST1 is used to control lighting devices depending on Ambient light intensity. The main function is to switch on lighting at dusk and switch them off at dawn. The switching on threshold can be adjusted by a knob on the front panel. The twilight switch is available with a light sensor.

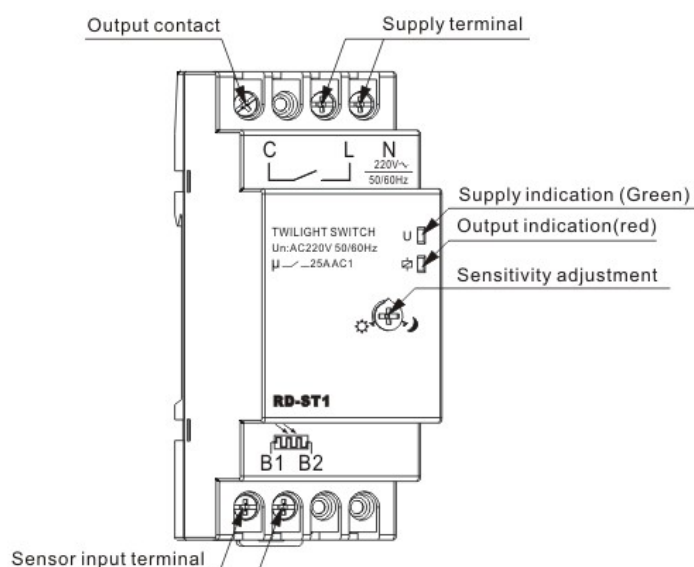
The light sensor contains a variable resistor sensitive to strength of illumination, it must be placed with permanent access to sunlight, but not be affected from any external or switch's own illumination system. At dusk, when the strength of light goes below the set lux value, after switch on delay, switch energizes its contacts. Delay can avoid any command caused by temporary illumination or headlights.

At dawn, when the strength of light goes above the set lux value, after switch off delay, switch de-energizes its contacts.

TECHNICAL DATA

Rated control voltage	AC220V
Frequency	50/60Hz
Sensitivity threshold	2~100lux adjustable
Switch-on delay(ton)	2-5s
Switch-off delay(toff)	10-15s
Hysteresis (switching off/on ratio)	1.20
Output contact	1NO
Current rating	25A/250V AC1
Incandescent lamp load	3000 W
Halogen lamp load	3000 W
Fluorescent lamp load (compensated)	1000 W
Fluorescent lamp load (uncompensated)	1300 W
Protection degree	Terminal: IP20, Sensor: IP65
Ambient temperature	-25°C~+40°C

APPEARANCE

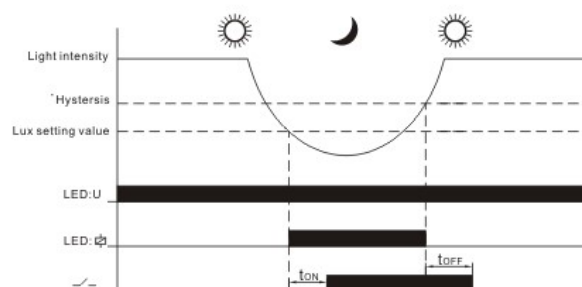


RD-ST1

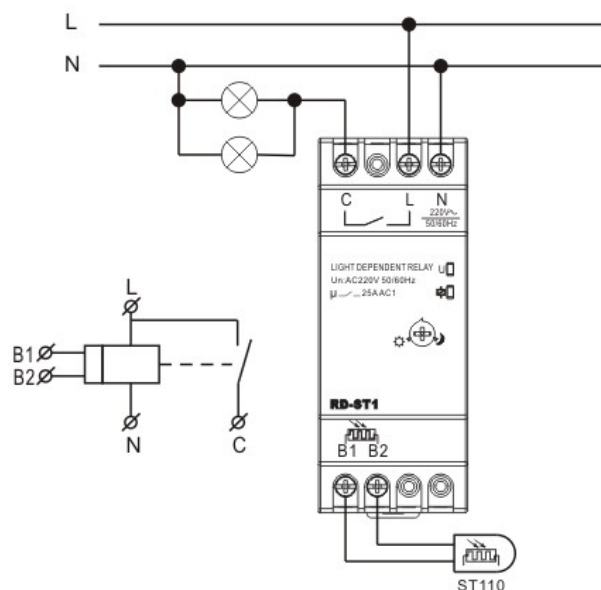
TWILIGHT SWITCH WITH SENSOR

Please read complete instructions prior to installation and operation of the device.

FUNCTION DIAGRAM



WIRING DIAGRAM



DIMENSIONS

